

Focus On What Is Important In Your Business



Overview

View and manage your reports with ease.

Retail Pro BI collects and compiles your data into usable, understandable action items.



Empower and Expand – Retail Pro BI provides accurate actionable data to every level of your company. Involving employees in business analytics is a great way to motivate and empower your team to improve business outcomes.



Info On The Go – Mobile access allows for easy insights on the go. View your business's information from any mobile device or computer, allowing you to deal with issues before they become problems.



Your Data Visualized – Retail Pro BI helps you see your business from different angles, helping you make the best, most profitable decisions quickly.



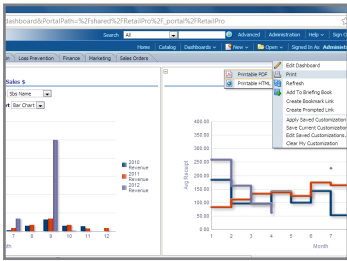
Plug & Play, Drag & Drop – A key strength of the Retail Pro BI system is the flexibility and clean user experience. Tailor Retail Pro BI reports and dashboards to fit your business, large or small.

Features & Benefits:

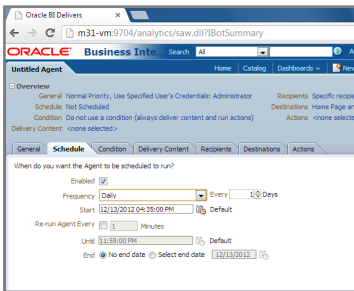
- Mobile access to actionable data via an app
- Interactive drill down through time, item and location hierarchies and period to period comparisons
- Complete synchronization with your calendars
- Rich variety of visualizations
- Reduced administration cost and improved bottom line
- Role-specific dashboards and content specific security
- Exception-driven alerts and analysis
- Customize to your specific business needs
- Functions equally well in single or multi-currency environments.
- Value added tax (VAT) support
- Translatable structure allows for localization of dashboards and reports
- Improve profit margins and generate sales

“The ability to focus attention on important things is a defining characteristic of intelligence.” - Robert J. Shiller, Irrational Exuberance

Why You Will Love Retail Pro® Business Intelligence

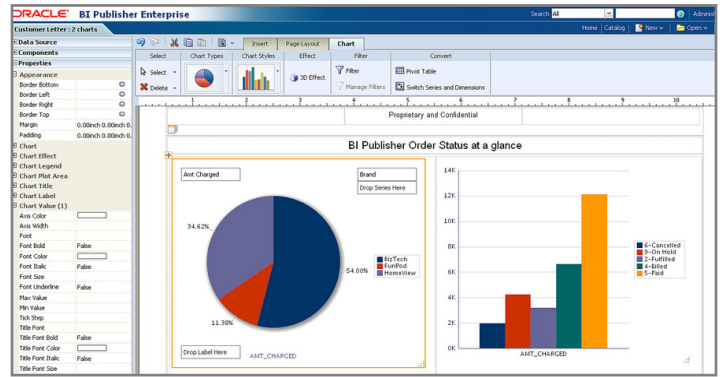


Keep Personnel Informed With Automatically Distributed Information
You can create reports that are automatically e-mailed out to a selected distribution list. For example, you may have a simple report showing yesterday's sales sent out every day, a monthly inventory report identifying dead items, and a quarterly report with a detailed financial breakdown.



Intelligent Agents Monitor KPIs Or Conditions And Notify You To Problems Or Opportunities
Many company's are faced with the loads of data, no time problem. By setting up Agents to monitor certain KPIs or conditions, you can be notified instantly via e-mail or text message when there's a

problem you need to address or an opportunity you can take advantage of. For example, for a seasonal style selling far better than expected, you might be able to get more in stock or at least shift your remaining stock to take advantage of stores with higher profit margins.



Your Data Made Beautiful
Can't see the forest for the trees? Retail Pro BI displays your information in easy to read charts and graphs. Identify problems or trends instantly with easily created data visualizations. Just choose the data sets you want to see visualized then drag and drop. You don't need to be an expert statistician to decipher your data - you just need Business Intelligence.



Gain Insight With Geolocation Data
See your data overlaid with Google Maps data to visualize your location-based data. For example, intuitively grasp customer distribution for store locations or advertising, or identify international sales variations.

Serious software for serious retailers™

About our company

Retail Pro International, LLC, is a global leader in Point of Sale, Store Operations, and Back-Office software applications for the specialty retail industry. Through its highly-specialized provider network, Retail Pro is delivered locally and supported regionally through approximately 90 offices worldwide. More than 52,000 retail stores in 86 countries using 18 different languages trust Retail Pro® to manage their operations; from single stores to prestigious, multinational retailers, Retail Pro is the proven global solution for serious retailers worldwide.

Headquarters: 400 Plaza Drive, Suite 200
Folsom CA 95630
Phone: 800-RETAILPRO (738-2457)
916-605-7200
E-mail: moreinfo@retailpro.com
Website: www.retailpro.com

Copyright © 2013 Retail Pro International, LLC. All rights reserved. Retail Pro and the Retail Pro logo are registered trademarks and/or registered service marks in the United States and other countries. Oracle and Oracle 11g are registered trademarks and/or registered service marks of Oracle Corporation. Other parties' trademarks or service marks are the property of their respective owners and should be treated as such.

Your Authorized Retail Pro® Business Partner