



**The Aimetis People Counter** is an intelligent video analytics application for use with qualified IP camera models. The application is ideal for retail environments, schools, banks, recreation facilities, prisons, airports and other environments that require intelligent customer and operational insight despite constraints on budgets, bandwidth and IT infrastructure support.

The application can operate as a fully functional intelligent video surveillance stand-alone product, or can be used with video management software depending on application requirements.



## Reliable, Cost Effective & Flexible

### Accurate People Counting

The Aimetis People Counter tracks the bi-directional flow of objects as they pass through a user definable line. The application is designed for entrances and exits and minimizes counting errors caused by environmental factors such as shadows, lighting changes and reflections.

### Reporting

The Aimetis People Counter provides on-camera reporting that can be queried by hour, day, month or year. Reports are available as tables and charts to make communication of intelligent video data simple and informative. Results can be exported directly into Microsoft Excel. For advanced reporting capability, integration with Video Management Software such as Aimetis Symphony™ is required.

### Small Footprint

Video analysis and reporting is executed on the camera instead of a central server, drastically increasing the scalability of video analytics. Combined with minimal IT infrastructure and support, the stand-alone solution is ideal for both small and large camera deployments.

## Key Features

- Fully embedded application requiring no additional hardware investment
- Bi-directional people-counting application
- Web-based interface
- Built-in, comprehensive, time-based reporting
- Simple set-up and configuration
- Easy integration with video management system for additional functionality

## Licensing

- One license per camera
- License includes:
  - Video analysis (*bi-directional people counting*)
  - On camera reporting

## Specifications

**Supported Cameras:** AXIS Camera Application Platform supporting ARTPEC-3 and ARTPEC-4 CPU's.\*

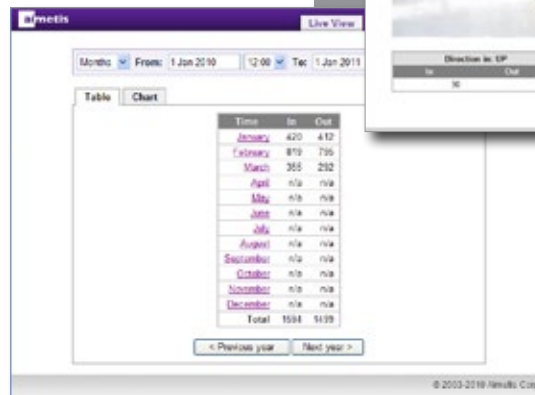
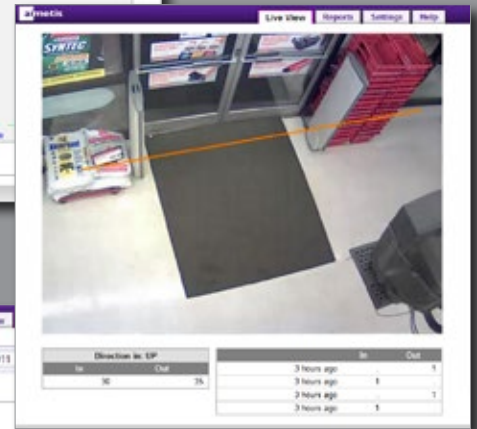
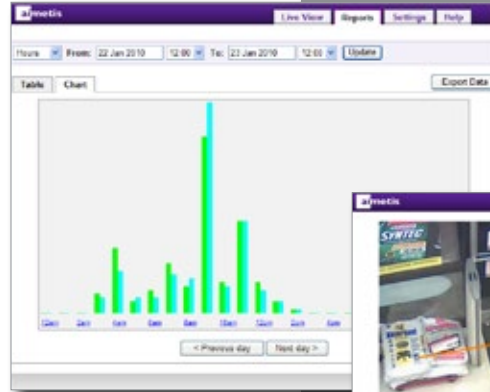
**Recommended Camera Angle:** Directly overhead

**Recommended Camera Height:** 3 - 5 metres (12 - 20 ft)

**Web Interface:** Internet Explorer 8 or higher

**Part Number:** AIM-AX-PC

\*See [www.axis.com](http://www.axis.com) for details



**Aimetis Corp.**  
500 Weber Street North  
Waterloo, Ontario  
Canada N2L 4E9

**Aimetis GmbH**  
Am Prime Parc 7  
65479 Raunheim  
Germany